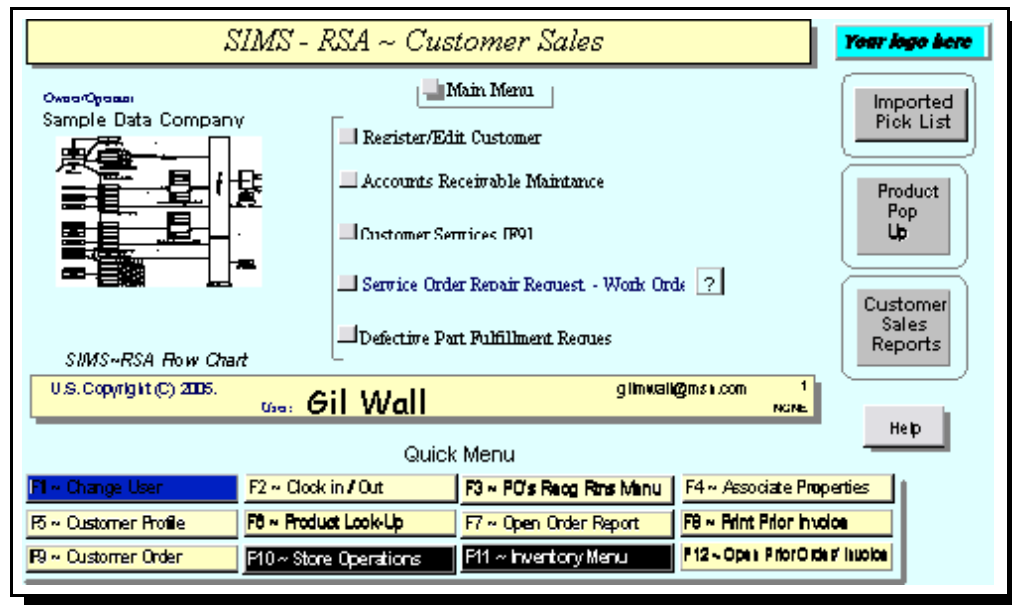


## Customer Services Menu

**Menu 5 of WAARSA application Menu 5 has two different menus the first menu is the Form Selection the second menu is Customer Service Report Menu.**



### Customer Register and Edit

Is to create clients and edit or view the Customer's record and it's detail.

The Detail includes, Total purchases, Average purchases, Total purchase count, Credit balance, Last Internet purchase, Account status, 'clear for purchase or if the account is on hold' and much more.

### Accounts Receivable Maintenance

Allows edit changes and manual entry of transactions needed to be posted to the clients account.

### Customer Services [F9]

This includes the Point-of-Sale module and POS Tags. Providing different Cash Register operations.

### Services Work Order Request

This is an optional feature allowing the processing of repair order's for shops that provide equipment repair.

### Defective Part Fulfillment Request

This process creates Merchandise Return Request for products returned and are eligible for return for replacement to the vendor.

### Import Pick List

Allows the importation of marketing lists from external files or from Internet text DIF and other file structures.

## Inventory Pop Up

This is a Inventory view module that displays the detail of an inventory item. Function [F6].

## Customer Sales Reports

This is Menu 5 part 2. List all the available reports related to the client or customer it's reports and other transaction reports. Customer Sales Reports had 18 different Reports and Charts.

## Customer Sales Reports Menu

