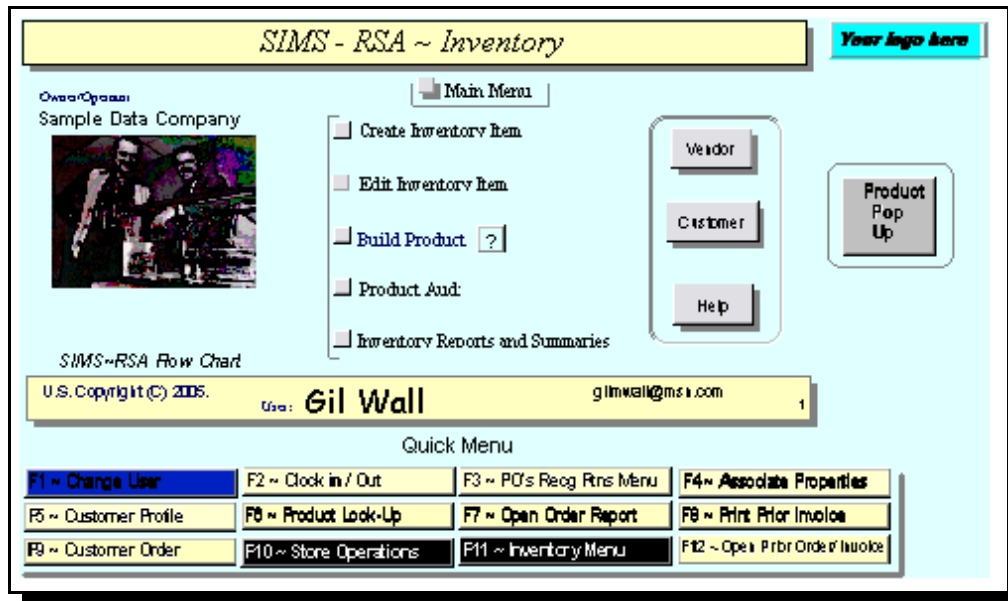


Inventory Menu, Menu Three



SIMSRSA Inventory has 4 components Create Inventory Item, Edit Inventory and Product Audit all work with a bar code scanner.

- **Create Inventory Item.** This view has two items. Inventory Product Number. This number is 35 characters wide and can handle all UPC 39 and ISBN bar code standards.
- **Beginning Quantity.** This is your inventory count for this item it can be entered at this time or entered later using the Audit Entry Form.
- **Inventory Edit.** This form is large as a view format be fast for use. This format collects lots of information and this data is shared throughout the WAARSA package. All fields are in a tab format allowing each field to be tabbed through with drop down fields for duplicate entries in different records.
- **Build Product.** Is a add on feature and is used for stores that build a product from raw materials.
- **Product Audit.** Is a sub menu of WAARSA Inventory. Including a form entry and two reports.
- **Inventory Reports and Summaries.** Is a sub menu of WAARSA Inventory.

WAASIMS DOCS - STORE INVENTORY

SIMSRSA provides more than just a POS operation. There are many different details than just the purchase of a product. Today the business person needs to watch closely the cost of doing business. We have added a tight control to the products (items) sold by your store. For every item sold we let you know down to the penny just what your profit will be. All inventory items are tied to a vendor looking at the APR form you can see the relationship of the items and vendors. Also all items sold via the POS form are stored in the JREntry database. The relationship of the items sold and the customer can be viewed when select Customer Edit and selecting items sold.

[Create Inventory]

When creating your new item we ask for the beginning inventory count of that item. Then we invoke the inventory item. The inventory item is tied to the vendor you purchase the item from. We also have included a format for floor audits so you can report your pilferage to your accountant.

[Edit Inventory]

The inventory edit (Function Key 'F11') also gives you a daily view of the movement of an item. This allows you to determine just what items are your best sellers and what items are losers, dead items that you may want to have a fire sale on to release your inventory cost burden. We have many different and straight forward costs structured in inventory edit so you have a real idea of your profit by its item properties.

All the data that is collected for the inventory item is displayed including a summary of the total inventory burden and profit by all inventory or by a selected group. These numbers can be passed to your accountant so they can better prepare a Statement of your business and Profit and Loss statement.

Each inventory item has two product SKU's. The main SKU is your number that you use in the store and is often the UPC code provided a packaged item or it can be your own control number. The second SKU is the number indent of the vendor. This is used during purchase order process representing the vendor's SKU.

The Cost structure has four tiers.

The first tier is the cost you declare and is used for product discounting we call this Marking Down. The Mark Down percentage is a whole number with a 2 digit fraction. The system sets each new item at a mark down of 3.25 percent. Controlling your item discounts for your sales associates. This mark down switch is also in the point of sale forms so when a discount is asked for the sales associate knows what is allowed.

The second discount is the true cost of the item purchased, not including shipping and other costs. This is needed when creating purchase orders and for you to base your cost structure.

The third and fourth is the cost of shipping, assembly and other charges combined, that may create an additional burden of supporting this item.

We also include a photo to the item, depending on your business this can be a very important tool. With today's technology this tool helps instead of just English to identify products.

[Inventory POPUP]

We have included an inventory popup that provides the item detail including the photo this can be invoked by pressing 'F6' give it a try! How Inventory Popup works, click the find button invoking a Lotus

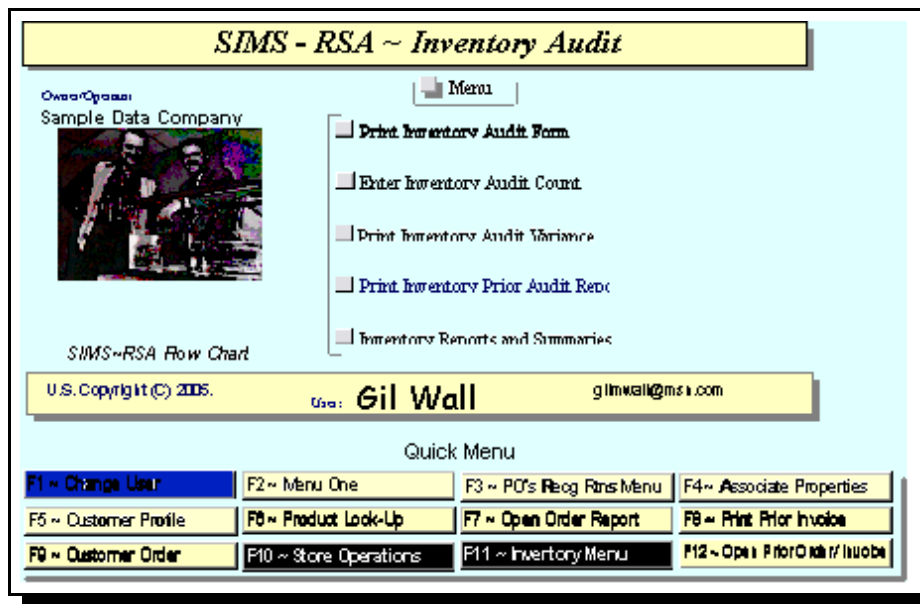
Macro Find. next you can simply press the enter key finding all inventory items or select the inventory item by it group, item description etc...
to exit click the X on the dialog display.

[Product Build]

This procedure was added because some clients wanted to take different items add them to a special item. Using this method a cost model is created. This works well for Computer systems, framing, basket items, bikes and different assemblies.

How it works, create an item name, identify it groups and include the items from the inventory database then set the quantity builds and add the item to the inventory set.

Product Audit Sub Menu

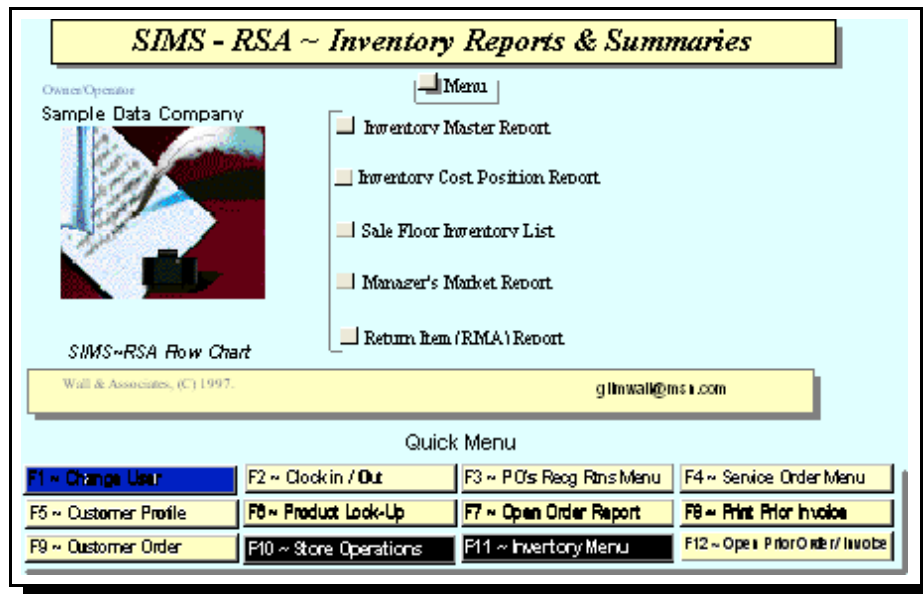


[Product Audit]

This is a simple but most important procedure. Using Lotus Macro Find you can identify the group of items you want to audit. Entering a (-) negative number will increase the inventory and a (+) positive number will decrease the inventory quantity. There are two reports. Audit Entry Sheet and a Audit Variance Report. This is a report for your accountant. Inventory Edit does not allow the editing of the quantity, the quantity can only be changed via, Product Receiving, Product Audit, POS and when then item is created.

So you can see how important this procedure can be.

Inventory Reports Sub Menu



[Inventory Reports]

- **Inventory Master Report** - Is a box listing of each item including photo report. The photo can be viewed but in not printed.
- **Inventory Cost Position Report** - Is grouped by category and sorted by Inventory Number. The report prints each cost group adds them up and multiplies it times the quantity on hand crating the inventory value.
- **Sales Floor Copy** - Is a listing of each item sorted by type, description and category the list includes inventory number, description location quantity on hand and retail price.
- **Manager's Market Report** - This report is a detailed breakdown of each product item including percentages, discounts, mark downs, description with sub totals and averages.
- **Inventory RMA Report** - Is a report showing the status of work in process of inventory items mark as damaged.
- **Sales Gross Profit Report** - This cross report between the POS and Inventory, showing the Extended Amount, Extended Cost, Extended Assm. Cost and the Gross Profit for each item sold. Grouped and sorted by date also sorted by Invoice number.